

<https://cula-uoc.eu/>

April – May 2026



12th International Course

Care and use of laboratory animals

Organizing Committee


M. Pavlidis¹, G. Garinis^{1,2}, T. Kosteas², E. Fanouraki¹,
N. Mastrodimou¹ and K. Sidiropoulou^{1,2}

¹University of Crete, Dept. of Biology

²Institute of Molecular Biology & Biotechnology, FORTH

Background History: *from 2014 to 2025*

The start ...

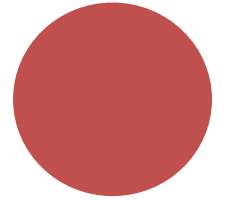
-  ERASMUS IP Course
-  Care and use of laboratory animals: Science, philosophy and society
-  Heraklion, 5 - 16 May 2014



✓ 87 Applications

✓ 32 Participants

- 9 Finland
- 3 The Netherlands
- 20 Greece





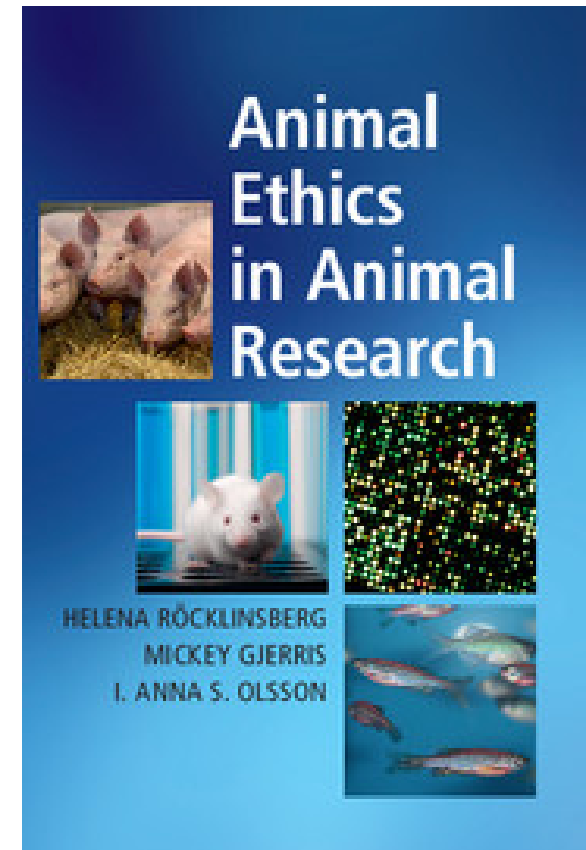
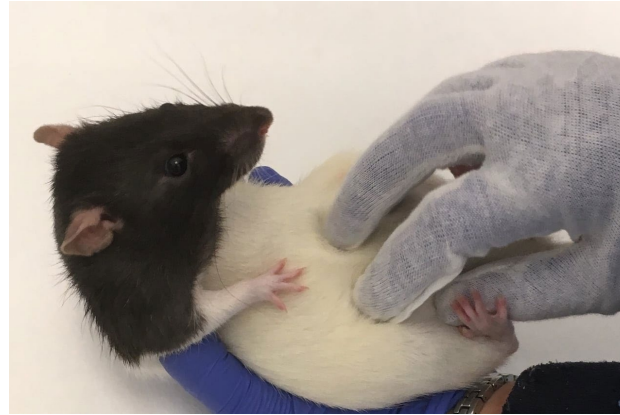
Hybrid System
(since 2021)



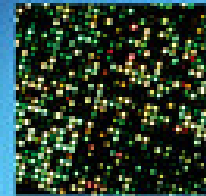
2014 – 2026
257 Participants

Why such a course?

I. Ethical concerns



Animal Ethics in Animal Research



HELENA RÖCKLINSBERG
MICKEY GJERRIS
I. ANNA S. OLSSON



Why such a course?

II. Legal requirements

European Convention for the Protection of Vertebrate Animals used for Experimental and Other Scientific Purposes *

Strasbourg, 18.III.1986

20.10.2010

EN

Official Journal of the European Union

L 276/33

DIRECTIVES

DIRECTIVE 2010/63/EU OF THE EUROPEAN PARLIAMENT AND OF THE COUNCIL

of 22 September 2010

on the protection of animals used for scientific purposes

(Text with EEA relevance)

COUNCIL DIRECTIVE

of 24 November 1986

on the approximation of laws, regulations and administrative provisions of the Member States regarding the protection of animals used for experimental and other scientific purposes

(86/609/EEC)

EU legal requirements

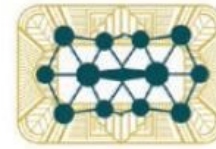
- *“Persons who carry out **procedures**, or take part in procedures, or take care of animals used in procedures, including supervision, shall have had **appropriate education and training**”*
(Article 26, Council of Europe Convention, 1986)
- *“Persons who carry out **experiments**, or take part in them and persons who take care of animals used for experiments, including duties of a supervisory nature, shall have **appropriate education and training**”*
(Article 14, EU Directive 86/609)
- *“Member States shall publish, on the basis of the elements set out in Annex V, minimum requirements with regard to **education and training** and the requirements for obtaining, maintaining and demonstrating requisite **competence** for the functions set out in paragraph 2”*
(EU Directive 63/2010)

Why such a course?

III. Good Science



Computacional analysis



Organs on a chip



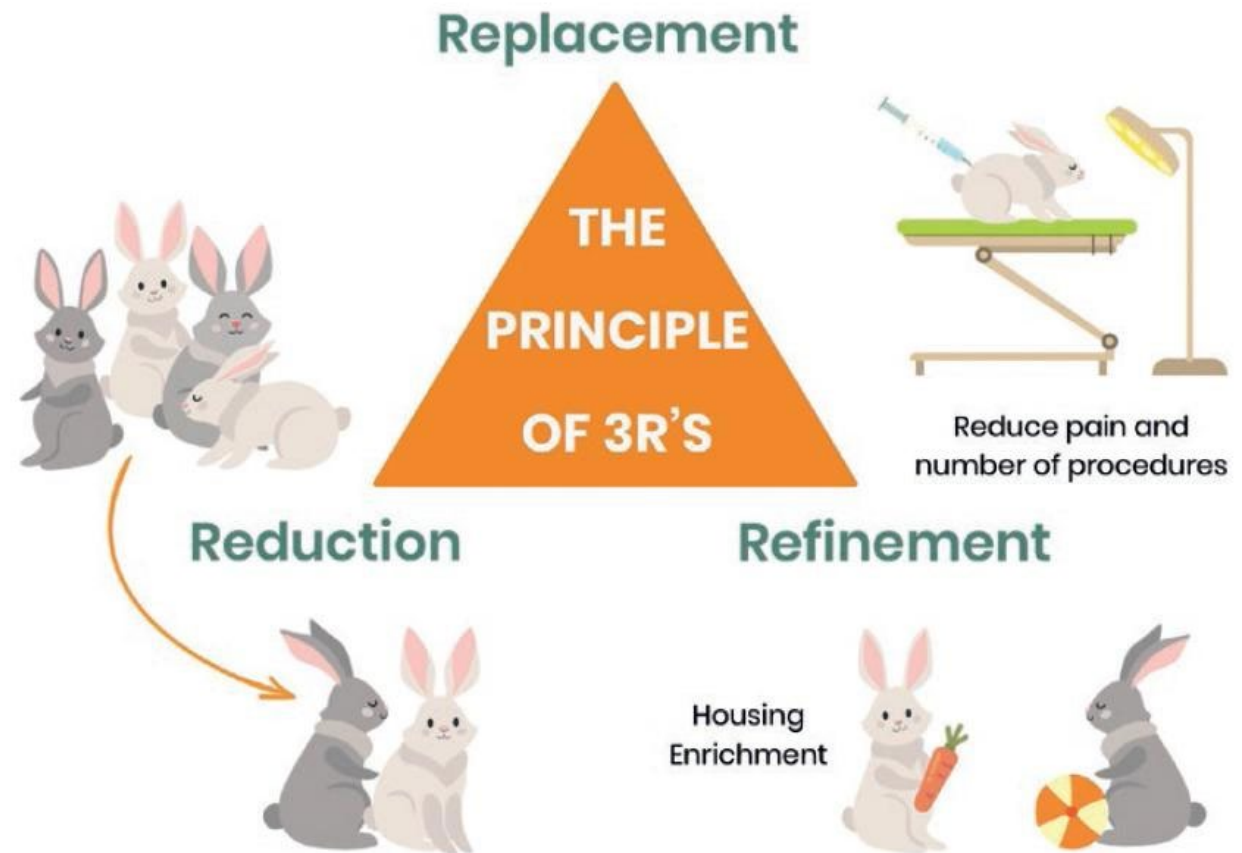
Organoids



Prokaryote



Cell cultures



CULA

Objectives

1. Deliver advanced, evidence-based knowledge and practical competencies in the ***care, handling, and use of vertebrate laboratory animals***.
2. Explain and critically evaluate the core ***philosophical frameworks, scientific foundations, and legal/regulatory requirements*** underpinning animal welfare.
3. Demonstrate a clear understanding of the ***principles of high-quality, ethical research*** involving laboratory animals, including experimental design, welfare assessment, and reproducibility.
4. Achieve certification (***FELASA-accredited***) confirming competence in the ethical and professional use of laboratory animals in research settings.



FELASA

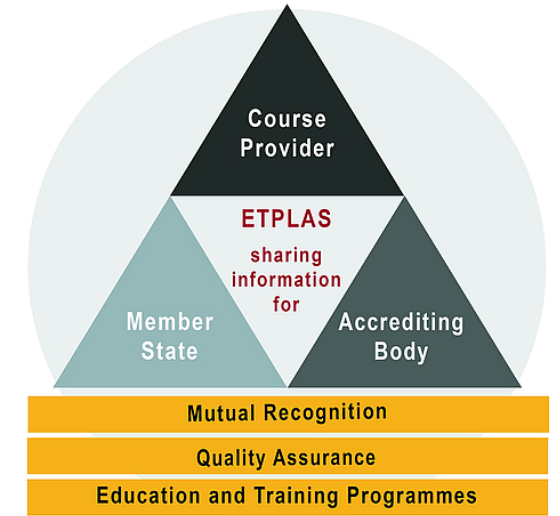
What is FELASA?

- ✓ Federation of European Laboratory Animal Science Associations (established in 1978).
- ✓ Umbrella organisation for laboratory animal science (LAS) associations in Europe.
- ✓ Membership is opened to laboratory animal science associations of nations in geographical Europe (21 constituent associations representing 28 countries).
- ✓ FELASA's accreditation follows the requirements in article 23 of the Directive 2010/63.
- ✓ FELASA accredits courses – not people – for Functions A, B, C and D as well as veterinarians, project evaluators and specialists.

What does it mean “appropriate education & training” ?

1. Development of a course

- ✓ A **course is defined** as a training programme consisting of one or more modules designed to provide the education and training needs of personnel dedicated to a specific function
- ✓ **It may or may not have been endorsed/accredited** by a National or Regional Authority or a Laboratory Animal Science Association



The Education & Training Platform
for Laboratory Animal Science
(ETPLAS)

What does it mean “appropriate education & training” ?

2. Accreditation

- ✓ FELASA accreditation is available for courses that develop initial training *leading to competency in each of the 4 Functions identified in the Directive*

- ✓ **EU Functions**

A: Carrying out procedures on animals

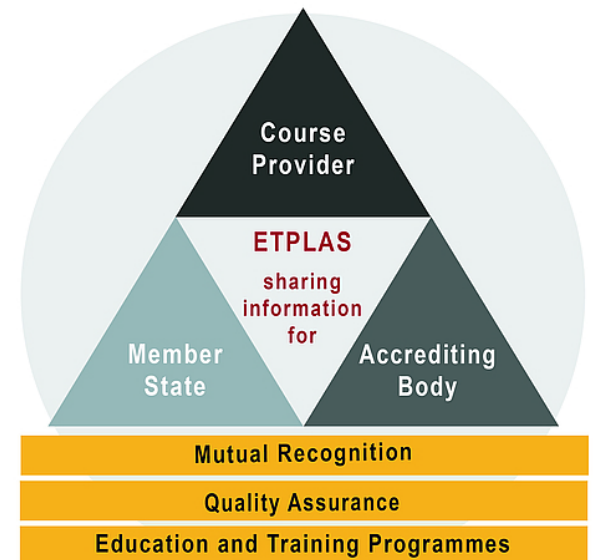
B: Designing procedures and projects

C: Taking care of animals

D: Killing animals

3. Quality Assurance

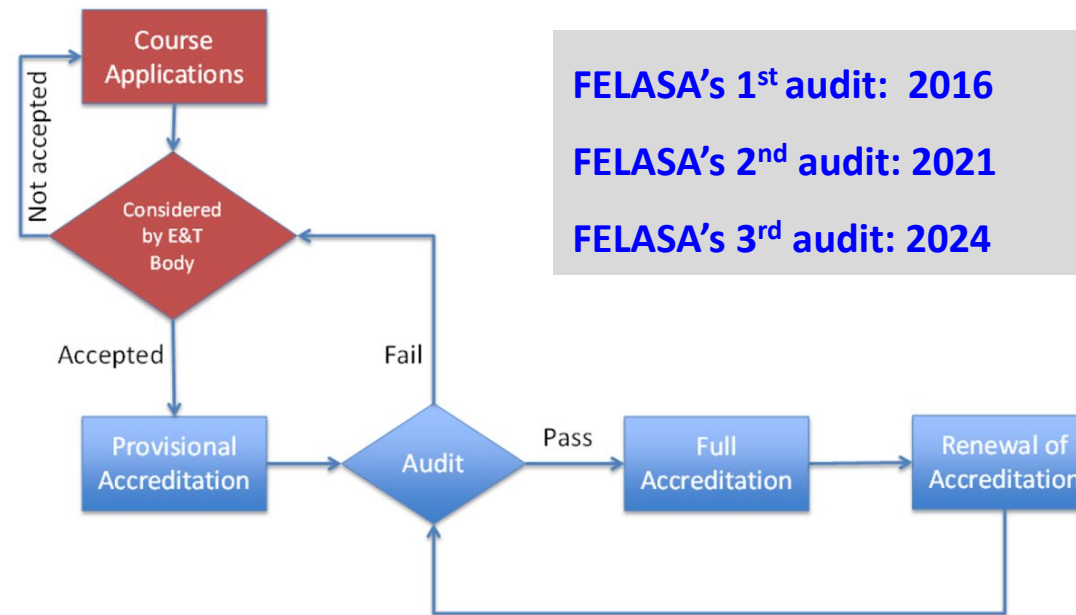
4. Mutual recognition



What does it mean “appropriate education & training” ?

3. Quality Assurance

FELASA E&T Board Accreditation Process

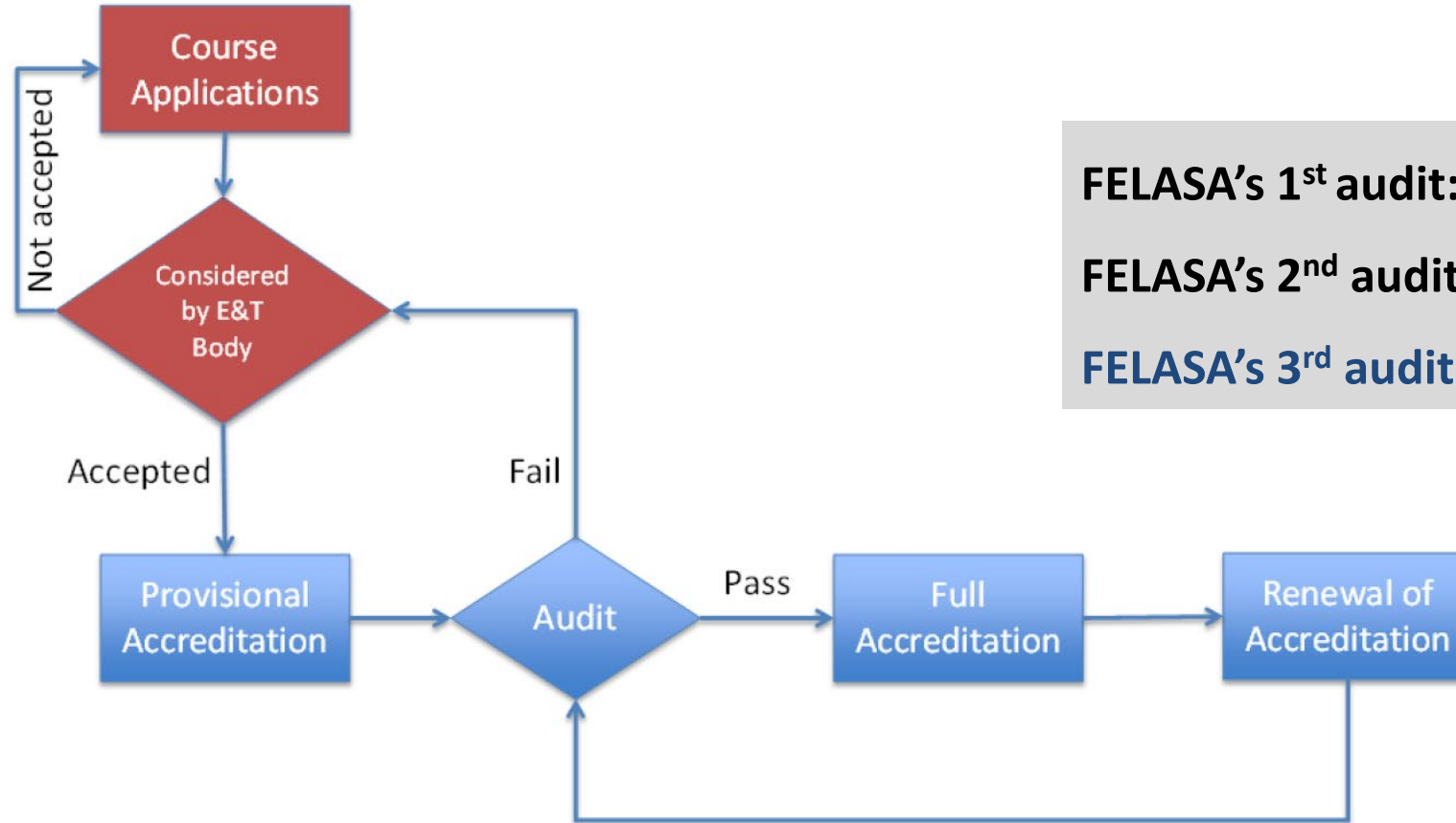


4. Mutual recognition

CULA has been awarded **FELASA** accreditation for Functions A, B, C & D

CULA has been officially certified by the **Center for Training and Lifelong Learning (KEDIVIM)** of the University of Crete

FELASA E&T Board Accreditation Process



FELASA's 1st audit: 2016

FELASA's 2nd audit: 2021

FELASA's 3rd audit: 2024

**The course has been awarded FELASA accreditation
for Functions A, B, C & D**

The course

Lectures

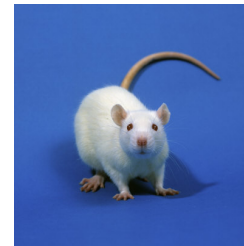
Practicals / hands-on training

Group work activities

Independent work activities

Species

- Rat (*Rattus norvegicus*)
- Mouse (*Mus musculus*)
- Zebrafish (*Danio rerio*)



Curriculum

**Ethical Aspects
& Welfare**

**Legal
Aspects**

Husbandry

**Life-cycle in
captivity**

**Breeding &
Genetics**

Management

**Stress, Pain &
Anxiety**

Procedures

**Health
assessment**

**Design & conduct
of experiments**

Group & independent work activities

- **License and application protocol: 4 - 5 students each**
- **Power point presentation: 10 min**

**APPLICATION FOR APPROVAL OF
EXPERIMENTAL PROTOCOL**

Hands-on Procedures

- ✓ Animal handling, immobilization and identification (tagging)
- ✓ Anesthesia and Analgesia
- ✓ Routes of drug administration
- ✓ Euthanasia
- ✓ Stitching
- ✓ Monitoring of water quality (*zebrafish*)

What's new

- ✓ Rat training simulator
- ✓ Demonstration of a small animal anaesthesia system
- ✓ Assessment of severity in mice, rats and zebrafish
- ✓ Welfare scoring systems (metrics)
- ✓ Welfare assessment schemes

Course Assessment

- ❖ **Multiple choice written exam – May 2026
(Pass: 7 out of 10)**
- ❖ **Re-examination (remote - July 2026)**

FINAL GRADE

- ✓ **Multiple choice written exam: 85%**
- ✓ **PPT – Application protocol: 15%**

Learning Outcomes

1. Evaluate *ethical dimensions of human-animal relationships* in research.
2. Apply *European legal requirements* to the use of animals in scientific procedures.
3. Integrate knowledge of *biology, behaviour, and welfare indicators* to assess animal condition.
4. Perform *key techniques* competently and responsibly in laboratory animal science.
5. Ensure *humane care and welfare* in all stages of lab animal use.
6. Develop and justify *experimental designs* that meet scientific and ethical standards.



**Thanks,
Welcome &
Enjoy the Course**

Care and use of laboratory animals

<https://cula-uoc.eu/>